

Company Profile

(100% Export Oriented Composite Knit Garment.)



WE have achieved LEED GOLD Certification from USGBC. For identifying visit: <http://www.usgbc.org/projects?keys=bangladesh>



A) |

Introduction :

Knit Garments industry is playing a pivotal role in the Bangladesh economy on Export sector. The demand for readymade garments has been ever-increasing. Today due to time constraints people prefer to buy readymade garments rather than going to a tailoring unit and getting the garments stitched after 10 to 15 days. Moreover people prefer to select from varieties that available in the market. So, it can be said that if the entrepreneur is creative and has a command over dress designing, he/she can be successful in the present day market.

Those who can furnish clients with the **best quality, competitive price, excellent customer services and prompt delivery** can only survive in the market. **Bay Creation Ltd.** takes immense pride in perceiving its role as the comprehensive architect of every single product that its produced.

Bay Creation Ltd is founded on and committed to a sustainable **Go Green** concept. In the last few years, keeping with its mandate, UNIDO coined the concept **Green Industry** to place sustainable industrial development in the context of new global sustainable development challenges.

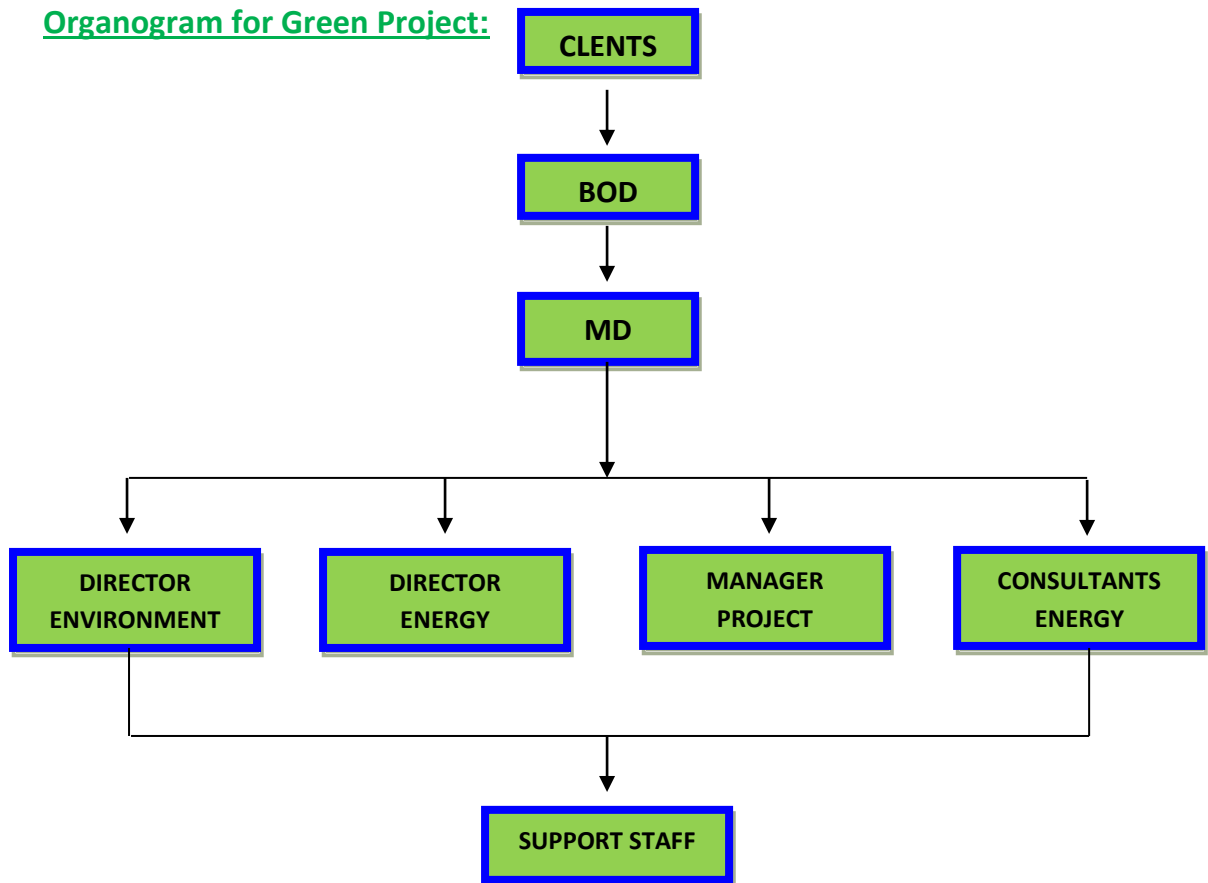
Green Industry means economies striving for a more sustainable pathway of growth, by undertaking green public investments and implementing public policy initiatives that encourage environmentally responsible private investments.

Green Industry means Environment friendly industry. Green Industry is producing environment friendly products or products which should help improve nature conditions to better and toward the best also during working process cause minimal damage to environment. Green industry ought recycling waste of working process (cutting) and recycling waste energy (heat). Green industry ought to reach waste less working process.

Greening of Industry is a method to attain sustainable economic growth and

promote sustainable economies. It includes policymaking, improved industrial production processes and resource-efficient productivity.

Organogram for Green Project:



WE have achieved LEED GOLD Certification from USGBC. For identifying visit:
<http://www.usgbc.org/projects?keys=bangladesh>
Our company also certified Oekotex & BSCI.



Why you should source from Bangladesh

Bangladesh is the latest hotspot for apparel outsourcing. In a survey on 2011 by McKinsey, Bangladesh came up at the number one spot for countries where Chief Purchasing Officers of major retailers planned to shift their apparel sourcing base to :



- **China is becoming less viable** – Severe labor shortages and increasing labor costs in China make apparel imports from China unviable in the long term also they are reducing to produce the apparel item and moving towards the other sectors like IT, electronic sector etc
- **Labor Availability** – Unlike China and India, where labor is moving away from apparel manufacturing to other more lucrative industries, Bangladesh has ample labor available for this industry.
- **Competitive Pricing** - Bangladesh has the distinct advantage of lower labor costs compared to China and India. Also now Bangladesh apparel's back up linkage sectors have been developed significantly from yarn to finished goods , only to import the raw cotton .
- **Preferential Status (EU)** – EU-GSP rules allow duty-free imports from Bangladesh.

B) Market Potential of the Product :

Bangladesh has a good market for Exporting readymade garments which are commencing since 1980. It has tremendous market in various countries all over the world & it has 200 billion US dollar global market for only knitwear's and achieved 12.5 billion only till date. Now Knitwear is the largest Export Sector in Bangladesh.

Total Knitwear Export (%) from Bangladesh (EPB Database) :

2009-2010	2010-2011	2011-2012	2012-2013	2013-2014
51.88	52.93	49.69	48.69	49.20

C) Project Details :

I. **Name &Address:** Bay Creation Ltd.

(An OKETEX Certified, BSCI "B" & LEED Certified Factory)

Corporate Office : 129, Agrani Al-Monowar Tower, Falt No # 5/C, BaraMogh Bazar, Ramna, Dhaka-1217, Bangladesh.

Factories:

Knitting division	<u>Dyeing Division:</u> (Proposed), due to gas	Green Project
BSCIC road Narayanganj-1420, Bangladesh.	Holding No-141, Karnogop, Rupshi, Rupganj, Narayanganj -1460, Bangladesh.	Holding No-141, Karnogop, Rupshi, Rupganj, Narayanganj -1460, Bangladesh.

II. **Status** : Private Limited.

III. **Year of establishment** :2008

IV. **Documents** :1. Incorporation No :C-73573(1615)/08
2. BOI Reg. No : L-62090804032-H
3. TIN Cer. No :316172766515
4. VAT Reg. No : 19281008145
5. IRC No : BA 102838
6. ERC No : RA 0088400
7. BKMEA Reg. No : 1480/C/2008
8. Fire Licence No : DHAKA/21144/2008
9. EPB Reg. No : BD 01431
10. Bond Licence No : 1235/CUS-SBW/2010

V. **Banker's** : **THE PRIMIERS BANK LIMITED**

Narayanganj Branch,
Al-Joynal Plaza, 56, S.M. Maleh Road,
Tanbazar, Narayanganj, Bangladesh.

Swift : PRMRBDDHNRG

And

SIBL (gulshan Branch)

VI. **Board of Directors :** **M. I. Siddique (Selim Mahbub)** is the **ED& CEO**.

He has 30 years' experience in apparel sector. He is proud of being a successful leader of the company. As a successful entrepreneur he is concerned with the multi-dimensional business like **Bay Creations** (knit garment sales house), **Bay Agro Food Processing Limited** (an agro based project), **Anondo Alo** (the very popular fortnightly magazine "a sister concern of the renowned TV channel **Channel-I**), **14TH April** (a media house) etc. He also engaged himself in different social activities and associated with many social organizations he is the **director of BKMEA**(Bangladesh Knitwear Manufacturers & Exporters Association). He traveled Europe, America, Canada, Malaysia, India and many other countries for business purpose for attending seminar symposium etc. He had a cultural background do achieved four times national award in performing arts. Still he is continuing drama stage performance & belonging a renowned drama group "**Theater Art Unit**".

Kabita Yesmin is the **Managing director** of the Company. She has 10 years' experience in this Trade. As a successful women entrepreneur she is concerned with the multi-dimensional business. She is hard working & capable of running any type of venture toward success. She also engaged herself in different social activities. She traveled various countries for business purpose for attending seminar symposium.

and

Muntasim billah siddique is the **Director** of the company and studying in Malaysia for higher education and he is the eldest son of Mr. M.I. Siddique (Selim Mahbub) & Mrs. Kabita Yesmin.

VII. **Production Item :** T-Shirts, Polo-Shirts, Tank-Tops, Short & Long

Pajama sets , Boxer, and all kinds of Knitted Garments, in all gender and size group in all type of knitted fabrics.

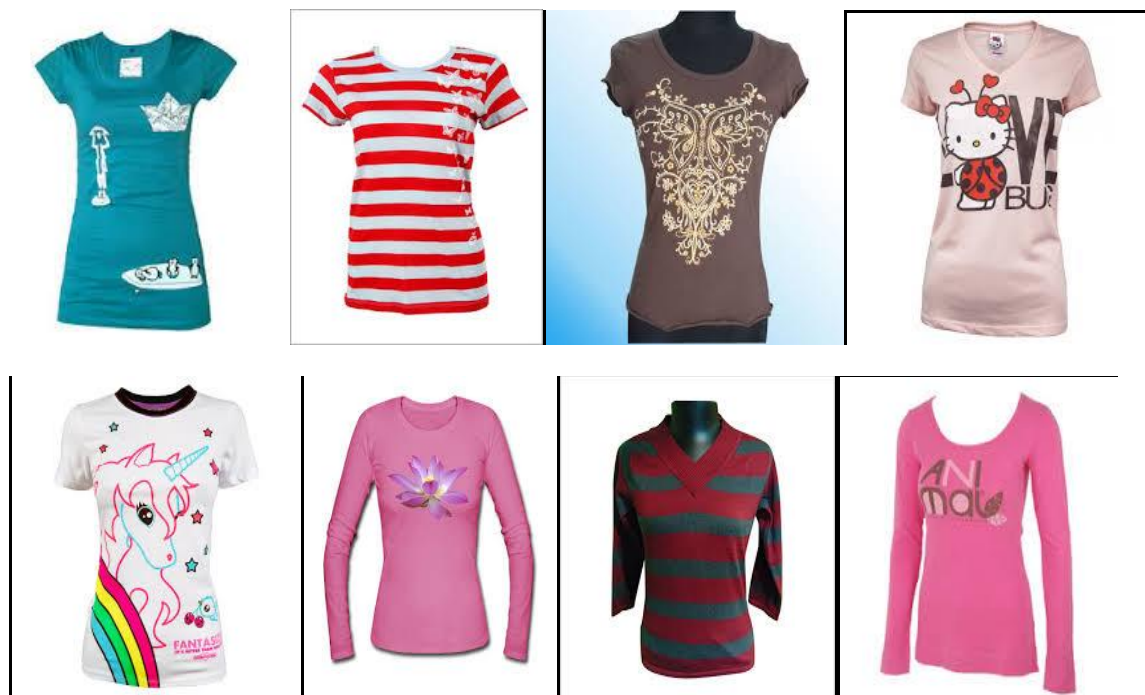
Our Product Line:



Men's T-Shirt 100% Cotton S/J H.S. Code-61.09



Men's Tank-Top 100% Cotton S/J H.S. Code-61.09



Ladies T-Shirt 100% Cotton S/J or 1X1 Rib H.S. Code-61.09



Ladies Tank-Top 100% Cotton S/J or 1X1 Rib H.S. Code-61.09



Men's Polo-Shirt 100% Cotton S/J or Pique H.S. Code-61.05



Ladies Polo-Shirt 100% Cotton S/J or Pique H.S. Code-61.06



Men's Boxer, short & Long Pant H.S. Code-61.07



Men's Pyjama H.S. Code-61.07



Ladies Pyjamas H.S. Code-61.08

Buyers



Belgium

MALU NV



U.K

OUTDOOR LEISUREWEAR



Poland

PEPCO GLOBAL
SORCING



Germany

KIK TEXTILEN



Spain

JHK TRADERS



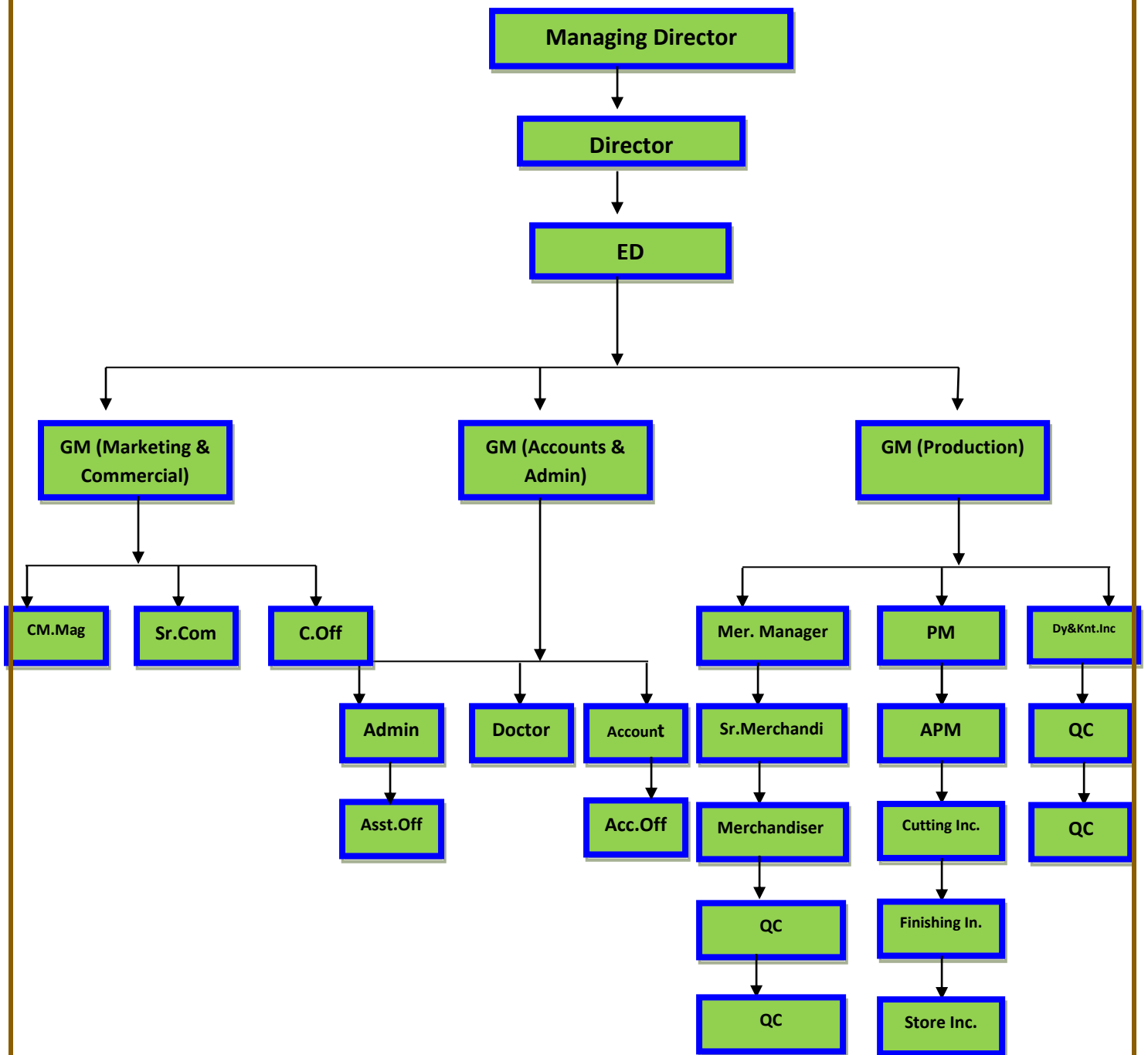
France

SOLO INVEST

VIII. Yearly Export (Lac US\$):

Year.	2011	2012	2013	2014	2015	2016	2017	2018
Export	42.50	33.07	44.02	63.59	82.52	89.30	71.34	74.33

Organogram of Bay Creation Ltd



Facility & Capacity Information

This factory has state-of-the-art knitting and dyeing machinery imported from Taiwan and Korea. With skilled production staff and efficient quality management systems, this factory has all the ingredients needed to produce high quality apparel.

Knitting

Daily capacity: **8000 Kg**

Single Jersey Knitting Machines from Fukahama, Taiwan (19" – 25" Dia): **25 no.s**

Rib knitting machines from SMART: **4 no.s**



Dyeing (Proposed)



Daily capacity: **8000 Kgs.**

The facility uses Winch Dyeing technology, and uses Reactive Dyeing.

8000 Kg Winches from Fong's, Korea: **7 no.s**

Printing

All types of facilities like Heat Transfer Printing, Chest Printing, or Embroidery, which may be needed for producing certain styles.



Sampling section



Equipped with 10 sewing machines and adequate number of people, it also has a designer.

Cutting Section

Equipped with fabric checking machine, Spreader machine and modern cutting equipment's, the facility has 40 people skilled in the job.



It has five high quality cutting machines from K.M. of Japan.

Before each fabric is cut, it is inspected for quality (Weight, Shrinkage, etc).



Sewing section



The facility has 33 sewing lines, each consisting of about 22 machines.

It has 33 supervisors and 33 line QCs to oversee the output and quality.



Garment Finishing



Skilled checkers inspect and finish the garments after sewing. It also has an ironing facility comprising 60 steam ironing machines and an equal number of ironers.

Packing & Storage

People employed in this section ensure that garments are poly-bagged and packed according to the clients' specifications.



Quality Assurance & Technical Support

All raw-materials coming into the factory are inspected /tested for quality before they are issued to production. The motto is '*Prevention is better than cure*'.

Utmost importance is given to Quality assurance – This factory inspect garments according to AQL plans.

The head of Quality Assurance reports directly to the General Manager, who takes care of technical support also. This makes sure that errors are detected and corrected, on a sustainable basis, with able support from technical support.



Product Safety Compliance

This factory takes care of the safety of products that come out of it. It was certified for **Oeko-Tex Standard** compliance (Class-I compliance makes it safe of infants) for **Knitted Readymade Garments** in the year 2009. Dyestuffs, Chemicals & Trims used in the factory are purchased from reputed suppliers like Sandoz & Dysin-Chem only. The sewing factory has a foolproof **Broken Needle Policy**, and it uses **Needle Detectors** too.

Workforce & Social Compliance

This factory employs over 1000 skilled workers. Women comprise 70% of them. 30% of the Employees are over 30 years of age, 50% age between 22 and 30, and the rest 20% are of the 18-22 age group. The factory does not employ any one below 18 years of age.

This factory was successfully audited for social compliance by **BSCI** and **OEKO-TEX**.



- No employee in this factory is under 18 years of age.
- All national and local laws governing wages, benefits and working hours are adhered to by the factory.
- Factory maintains all labor laws, environment law & customs law etc.
- Health & Safety is accorded utmost importance. Factory is equipped with enough firefighting equipment's, fire alarm system, adequate drinking water facilities, dining room, sufficient numbers of toilets, first aid facilities. The factory also has a day-care center for women workers' babies. The factory has made a permanent doctor available for all its employees.

GREEN Project of "Bay Creation Ltd."

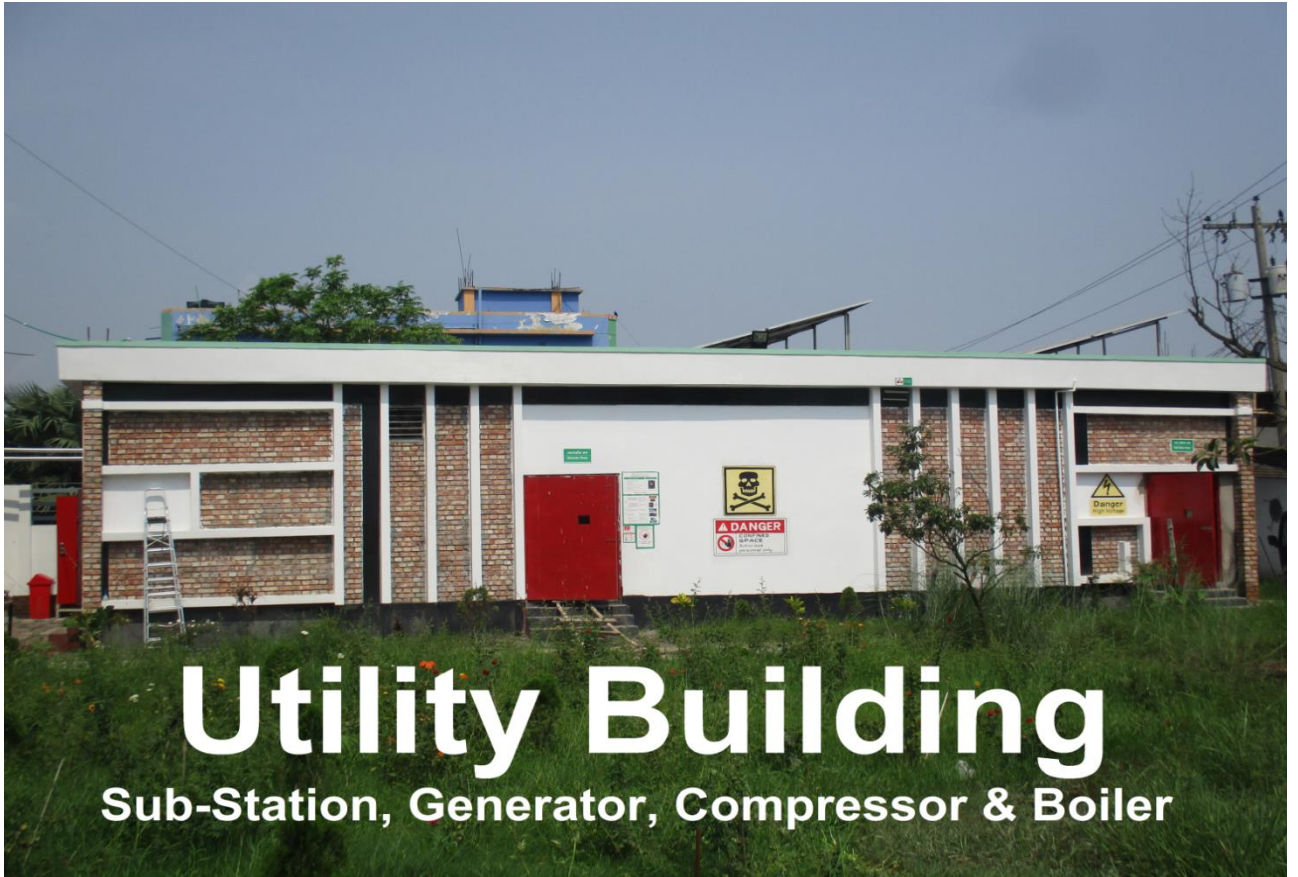




OEKO-TEX®
CONFIDENCE IN TEXTILES
STANDARD 100
09.HBD.71659 HOHENSTEIN HTTI
Tested for harmful substances.
www.oeko-tex.com/standard100

BSCI
Business Social Compliance Initiative





Utility Building

Sub-Station, Generator, Compressor & Boiler

Division.	Section.	Proposed Space
Garments Division, Printing & Embroidery	Area	64,569 sq ft
	Total Area	64,569 sq ft

D) Machinery list (All Auto):

LIST OF MACHENARY (33 NO'S SEWING LINE)						
MACHINE NAME (ALL AUTO)	BRAND	ORIGIN	NO OF MACHINE			
Plane Machine 1 Needle	ZOJE	CHINA	220			
Plane Machine 2 Needle	ZOJE	CHINA	10			
Over Lock 4 Thread	HIKARI	CHINA	315			
Lock Cy. Bed	KINGTEX	TIWAN	125			
Lock Small Cy. Bed	KINGTEX	TIWAN	5			
Lock Flat Bed	KINGTEX	TIWAN	65			
Button Hole	ZOJE	CHINA	7			
Button Stitch	ZOJE	CHINA	10			
Cloth Cutting M/c.	ZOJE	CHINA	10			
Rib Cutter	ZOJE	CHINA	20			
Feed of the Arm	ZOJE	CHINA	10			
Back Tap	ZOJE	CHINA	5			
Bar tack	ZOJE	CHINA	5			
Picot Machine	ZOJE	CHINA	5			
Needle Detector	HASIMA	JAPAN	4			
Thread Shaker	ZOJE	CHINA	4			
Elastic Joint	ZOJE	CHINA	6			
Elastic attaching	MEGASEW	TIWAN	16			
Others Cutting, Sewing & Finishing Machinery.	WINDA	CHINA	1			
Plotter Machine	AUTOMAC	CHINA	2			
Thread re-conding M/c	ZOJE	CHINA	4			
Neck Print M/c	WINDA	CHINA	6			
TOTAL=			855			

E) Production Capacity :

Sl. No.	Division	Production Capacity/Day
03.	Garments Division	45000- 50000 pcs
02.	Printing Division	18000 pcs
03.	Embroidery Division	5000 pcs (proposed)
04.	Dyeing Division	12000 Kg(proposed)

WAY OF WORK:

Bay Creation Ltd. is a 100% export oriented Composite knit garment. It always executes the orders as per the buyer's requirement. **Bay Creation Ltd** produces tee shirts, polo shirts, tank top, sweet shirts, basic t-shirts, long sleeve, high neck, Boxer, ladies dress etc. It holds the quality, quantity and on time delivery under the supervision of **Bay Creations** (Knit garment sales house).

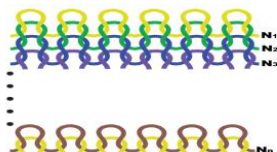


Figure 1: Imaginary repeat of knit fabric used to formulate equation.

Fabric Standard:

Bay Creation Ltd uses 100% combed/carded cotton. Sometimes uses TC, PC, CVC & Polyester ETC .



Quantity maintenance:

Full Container Load (FCL) is our standard. Other quantities may be accepted upon request.



Standard of quality controlling:

After receiving the order our own Quality Controller always, attend to supervise & maintain the quality. On the other hand, Buying House provided Quality Controller supervise properly & find out the fault. Then we all check the quality co-operatively. Our production quality depends on IN LINE. Finally, we inform the Buyer's delegate to check the pre-shipment quality.



Fabric color:

Many color are acceptable which followed by the Pantone reference.



Printing quality:

Any size, parts, location of the product can be printed carefully and try to get good impression. Bay Creation Ltd. judges verities color. It followed the Pantone reference. It is also uses Regular print, Rubber print, Puff ink, Plastic-sol, heat transfer.



Embroidery Standard:

Any size from 1 to 9 colors is always operated by the factory. Embroidery is monitored by the high technology as like computer, scanner, printer etc.



Packing Level:

Packing level is very high. All times, maintain the high quality of packing system. Individual poly bag, blister poly bag uses to fulfill the perfection of the product. Height, width and thickness of Poly bags are accurate for all items.



Samples:

As per every order samples will be provided free of cost. Our factory can maintain proper communication to approve the sample. Maximum 7-10 days are very enough to make the sample.



Shipment:

Shipment would be complete to follow on FOB or C&F regulations. All time we try to fulfill the Full Container Load (FCL) shipment. Bangladesh to Europe, transit time is 4 to 5 weeks by sea and 1 week by air.

Delivery terms & conditions:

Delivery time depends on the date of receiving the L/C from you. On the other hand, the order confirmation dates.

- Minimum 90 days + transit time if fabric is imported by sea.
- Minimum 60 days + transit time if fabric is imported by air.
- Minimum 30 days + transit time fabric is available in our factory.

Necessary documents:

The legal authority will provide all necessary documents at the same time of shipment from country of origin. That document is as follows:

1. Export Certificate
2. Export License
3. GSP Certificate etc.

And all other related doc's

Environment:

The factory contains hygienic situation. So every stuff & worker can do work on 9 am to 6 pm safely.

Payment Terms & conditions:

By At Sight L/C, TT, DAP.



Contact us

Address : 129 Agrani Al-Monower Tower, C-5, Bara Mogh Bazar, Ramna, Dhaka-1217.
Telephone : +88.02.9336670, 9349212
Fax : +88.02.9345589
Contact : **M.I.Siddique (Selim Mahbub)**
Cell : **+8801973456867**
E-mail : ceobay@gmail.com, ceo@bdbaycreations.com
Web : <https://bdbaycreation.com>

